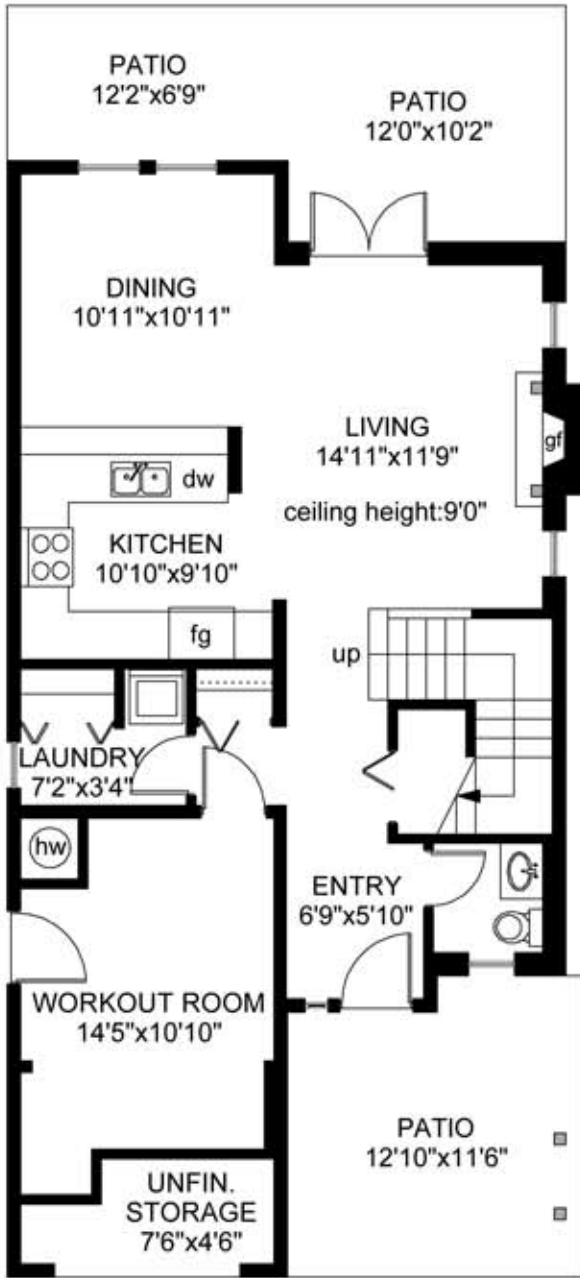
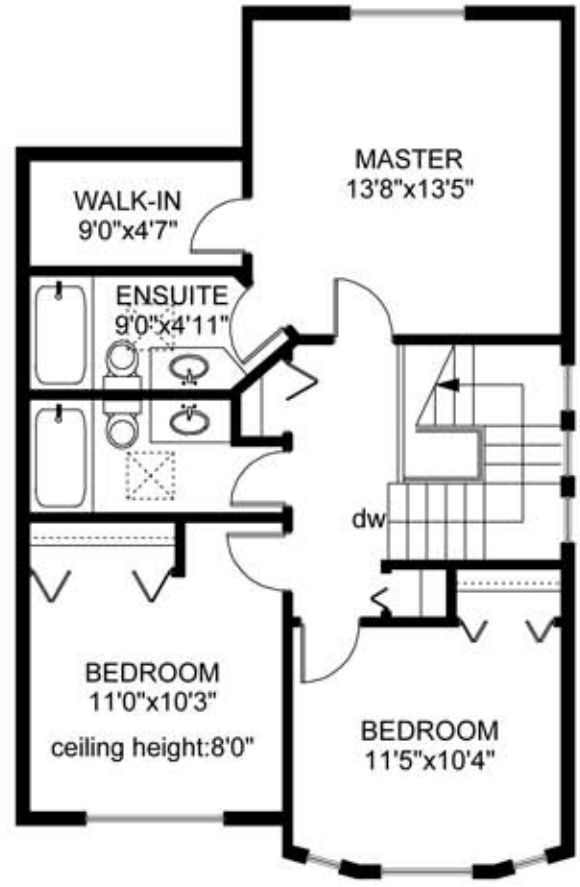


1305 BALMORAL ROAD

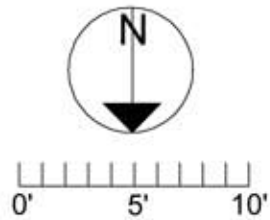


MAIN FLOOR
990 SQ.FT



UPPER FLOOR
821 SQ.FT

	FINISHED SQ. FT.	UNFINISHED SQ. FT.	TOTAL SQ. FT.
MAIN	933	57	990
UPPER	821	0	821
TOTAL	1754	57	1811
PATIOS	0	364	364



MEASURED ON: 11/04/08
DRAWING FILE: 06777

Tafe Measure VICTORIA, B.C.
Ph. 883.8894
www.tafemeasure.com